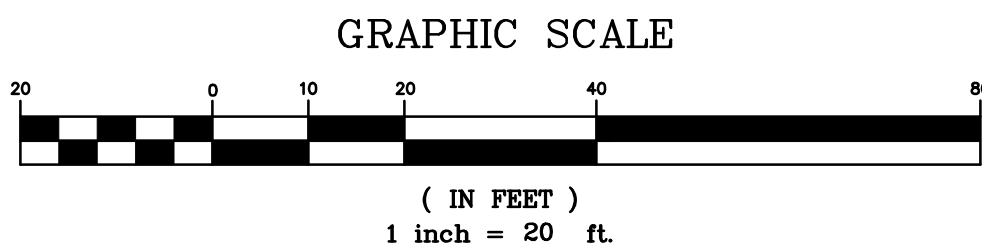


ALTA/NSPS LAND TITLE
AND TOPOGRAPHIC SURVEY

BY
GENTILE AND ASSOCIATES, INC.
PROFESSIONAL LAND SURVEYORS

550 E. ST. CHARLES PLACE
LOMBARD, ILLINOIS 60148
PHONE : (630) 916-6262



STORM STRUCTURES

- 1) CATCH BASIN
RIM 71.70
(FULL OF DEBRIS)
- 2) CATCH BASIN
RIM 71.81
10" VCP E INV 69.01
- 3) CATCH BASIN
RIM 72.60
12" W INV 54.00
12" E INV 53.95
10" VCP S INV 66.50
- 4) CATCH BASIN
RIM 72.47
(FULL OF DEBRIS)
- 5) CATCH BASIN
RIM 72.41
12" W INV 53.91
12" E INV 53.86
10" VCP SW INV 65.41
- 6) CATCH BASIN
RIM 72.36
(FULL OF DEBRIS)
- 7) CATCH BASIN
RIM 71.99
(FULL OF DEBRIS)
- 8) CATCH BASIN
RIM 72.62
(FULL OF DEBRIS)
- 9) CATCH BASIN
RIM 73.34
8" VCP N INV 70.04
- 10) CATCH BASIN
RIM 73.21
8" VCP S INV 70.66
- 11) CATCH BASIN
(FULL OF WATER)
RIM 73.01
TOP OF PIPE 68.51
- 12) CATCH BASIN
RIM 73.28
S INV 68.18
- 13) CATCH BASIN
RIM 73.93
12" VCP W INV 63.93

COMBINED STRUCTURES

- 1) COMBINED MANHOLE
RIM 73.95
12" VCP W INV 65.30
12" VCP E INV 65.25
- 2) COMBINED MANHOLE
RIM 73.93
12" VCP W INV 65.03
12" VCP E INV 64.98
10" VCP S INV 65.38
- 3) COMBINED MANHOLE
RIM 73.85
12" VCP W INV 62.75
12" VCP NE INV 63.25
18" VCP N INV 62.35
18" VCP S INV 62.20
- 4) COMBINED MANHOLE
RIM 73.93
12" VCP SW INV 63.93
- 5) COMBINED MANHOLE
RIM 72.91
18" VCP N INV 61.76
18" VCP S INV 61.71

MANHOLES

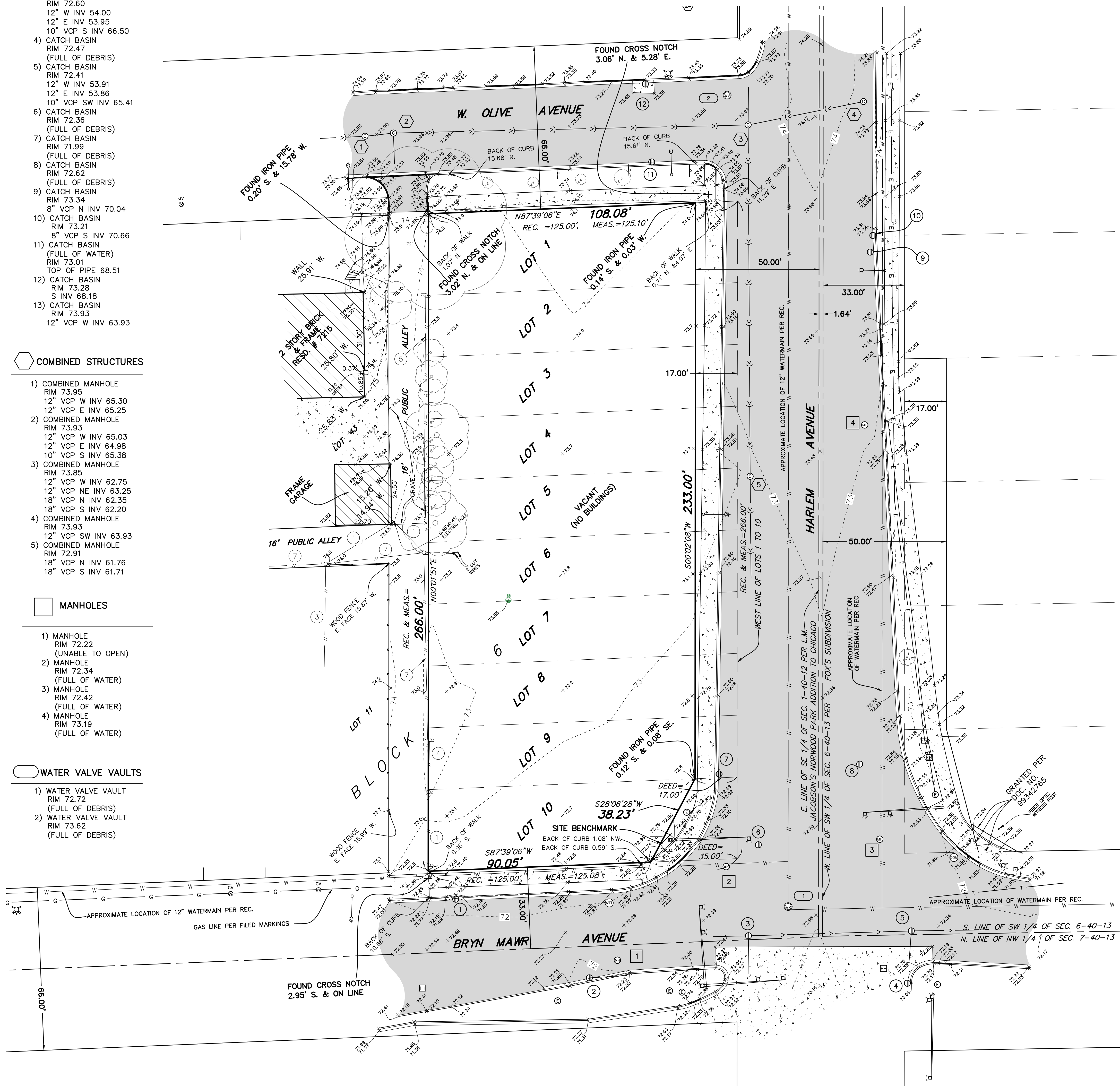
- 1) MANHOLE
RIM 72.22
(UNABLE TO OPEN)
- 2) MANHOLE
RIM 72.34
(FULL OF WATER)
- 3) MANHOLE
RIM 72.42
(FULL OF WATER)
- 4) MANHOLE
RIM 73.19
(FULL OF WATER)

WATER VALVE VAULTS

- 1) WATER VALVE VAULT
RIM 72.72
(FULL OF DEBRIS)
- 2) WATER VALVE VAULT
RIM 73.62
(FULL OF DEBRIS)

LOTS 1 TO 9 (EXCEPT EAST 17 FEET THEREOF) AND LOT 10 (EXCEPT THAT PART LYING EAST OF A LINE DESCRIBED AS FOLLOWS: BEGINNING IN NORTH LINE OF LOT 10, 17 FEET WEST OF NORTHEAST CORNER THEREOF TO A POINT ON SOUTH LINE OF SAID LOT WHICH POINT IS 35 FEET WEST OF SOUTHEAST CORNER THEREOF) IN BLOCK 6 IN L.M. JACOBSON'S NORWOOD PARK ADDITION TO CHICAGO BEING A SUBDIVISION OF PART OF EACH 1/2 OF SOUTHEAST 1/4 OF SECTION 1, TOWNSHIP 40 NORTH, RANGE 12, EAST OF THE THIRD PRINCIPAL MERIDIAN, IN COOK COUNTY, ILLINOIS.

TOTAL AREA: 28425.76 SQ FT., 0.65 AC. (MORE OR LESS)



LEGEND

	TRAFFIC SIGNAL LIGHT		TREE WITH TRUNK DIAM. SIZE
	UTILITY PEDESTAL		OVERHEAD WIRES (# OF WIRES)
	SIGN POST		STORM SEWER
	LIGHT POLE		COMBINED SEWER
	CLOSED COVER DRAINAGE STRUCTURE		UNDERGROUND ELECTRIC
	FIRE HYDRANT		UNDERGROUND TELEPHONE
	OPEN COVER DRAINAGE STRUCTURE		GAS MAIN
	COMBINED SEWER MANHOLE		WATER MAIN
	WATER SHUTOFF VALVE WITH 8" CASING		
	WATER VALVE VAULT		
	GAS VALVE		
	UTILITY POLE		
	GUY WIRE (ANCHOR)		
	AT&T MANHOLE		
	WOW MANHOLE		
	COMMUNICATION MANHOLE		
	MANHOLE		ASPHALT PAVEMENT
	ELECTRIC MANHOLE		CONCRETE PAVEMENT
	HANDHOLE		
	ELECTRIC BOX		

BASE SCALE : 1 INCH = 20 FEET
DISTANCES ARE MARKED IN FEET AND DECIMAL PARTS THEREOF

ORDERED BY : CAPRI DEVELOPMENT LLC

DRAWN BY : MMG

CHECKED BY : JFG

SURVEYED BY : BWG

COMPARE ALL POINTS BEFORE BUILDING BY SAME AND AT ONCE REPORT ANY DIFFERENCE. FOR BUILDING LINE AND OTHER RESTRICTIONS NOT SHOWN HEREON REFER TO YOUR ABSTRACT DEED, CONTRACT AND ZONING ORDINANCE.

ORDER NO. 20-22094

NW HARLEM & BRYN MAWR

NOTES:

THE LOCATIONS OF UNDERGROUND UTILITIES AS SHOWN HEREON ARE BASED ON ABOVE GROUND STRUCTURES AND RECORD DRAWINGS PROVIDED THE SURVEYOR. LOCATIONS OF UNDERGROUND UTILITIES MAY VARY FROM LOCATIONS SHOWN HEREON. ADDITIONAL BURIED UTILITIES/STRUCTURES MAY BE ENCOUNTERED. NO EXCAVATIONS WERE MADE DURING THE PROGRESS OF THIS SURVEY TO LOCATE BURIED UTILITIES/STRUCTURES. BEFORE ANY EXCAVATION BEGINS ALL UTILITY COMPANIES SERVING THE PROPERTY SHOULD BE CONTACTED FOR VERIFICATION OF FIELD LOCATION.

FINAL SURVEY PENDING RECEIPT OF OUC UTILITY RECORDS FILE NO. EFP-105296.

BASIS OF BEARING:

ILLINOIS STATE PLANE COORDINATE SYSTEM EAST ZONE.

BENCHMARK: CHICAGO CITY BM # 596

MONUMENT IS LOCATED 28 FEET NORTH OF THE NORTH LINE OF EAST-WEST ALLEY NORTH OF WEST HIGGINS AVENUE AND 12.5 FEET EAST OF THE WEST LINE OF NEVA AVENUE.

ELEV. = 70.31 (CHICAGO CITY DATUM)

SITE BENCHMARK:

SQUARE CUT ON TOP OF CONCRETE LOCATED AT THE SOUTHEAST CORNER OF SUBJECT PROPERTY.

ELEV. = 73.74

TABLE "A" ITEMS LISTED IN SURVEYOR'S CERTIFICATE NOT OTHERWISE SHOWN HEREON:
7) NO NO BUILDINGS ON SUBJECT PROPERTY AT TIME OF SURVEY.
9) NO PARKING STALLS ON SUBJECT PROPERTY AT TIME OF SURVEY.

STATE OF ILLINOIS) S.S.
COUNTY OF DUPAGE)

TO: 1) CHICAGO TITLE INSURANCE COMPANY
2) DEMICHELE PROPERTIES, LLC, AN ILLINOIS LIMITED LIABILITY COMPANY
3) CAPRI DEVELOPMENT LLC

THIS IS TO CERTIFY THAT THIS MAP OR PLAT AND THE SURVEY ON WHICH IT IS BASED WERE MADE IN ACCORDANCE WITH THE 2016 MINIMUM STANDARD DETAIL REQUIREMENTS FOR ALTA/NSPS LAND TITLE SURVEYS, JOINTLY ESTABLISHED AND ADOPTED BY ALTA AND NSPS ON OCTOBER 8TH AND 9TH RESPECTIVELY AND INCLUDES ITEM NO'S.

1, 2, 3, 4, 5, 7, 8, 9, 11 AND 14 OF TABLE A THEREOF.

THE FIELD WORK WAS COMPLETED ON AUGUST 6, A.D. 2020.

DATE OF PLAT: AUGUST 13, A.D. 2020

BY: ILLINOIS PROFESSIONAL LAND SURVEYOR NO. 2925
MY LICENSE EXPIRES NOVEMBER 30, 2016
ILLINOIS PROFESSIONAL DESIGN FIRM LICENSE NO. 184.002870